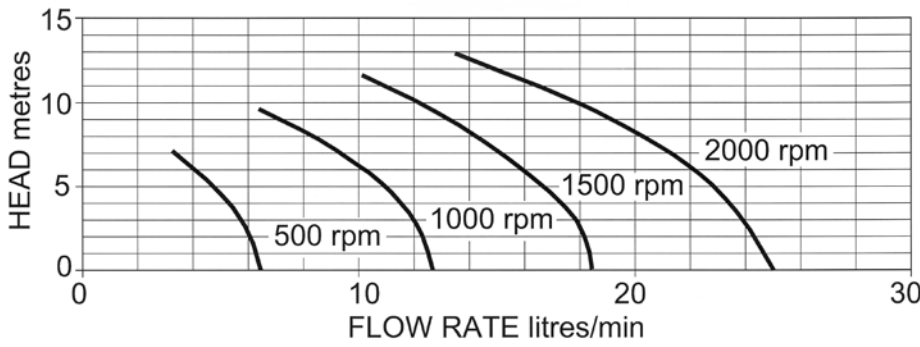


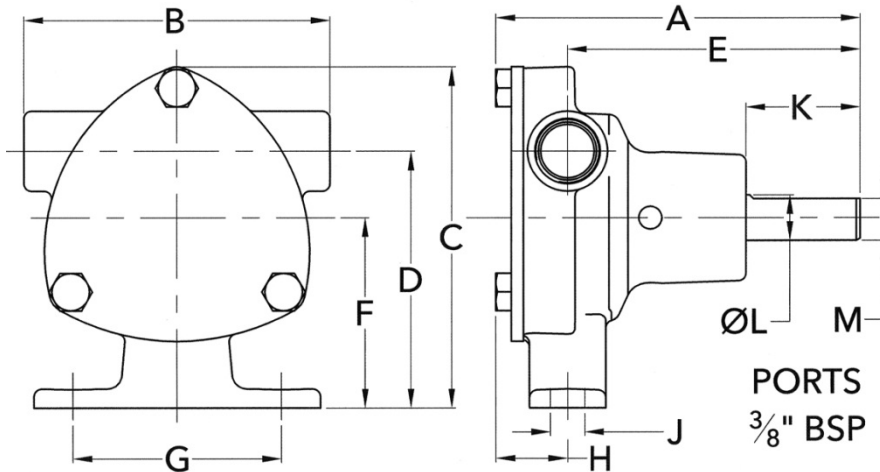
**PERFORMANCE:**



MODEL	Maximum flow rate		Maximum head	
	l/min	gall/min	metres	feet
51520-2001	25	5.5	13	43

**DIMENSIONS:**

**WEIGHT: 0.67Kg**



A	B	C	D	E	F	G	H	J	K	L	M
95	80	90	68	77	50	55	19	9	30	Ø12	11

**MATERIALS OF CONSTRUCTION:**

Body	Bronze
Impeller	Neoprene
Shaft	Stainless steel type 316
Shaft seal	Mechanical carbon-ceramic
Bearings	Sealed ball bearings
Port type	3/8" BSP to BS21 (DIN2999)

**MODELS:**

51520-2001      *Standard Neoprene impeller*



a xylem brand

**BRONZE FLEXIBLE  
IMPELLER  
PEDESTAL PUMP  
51520 SERIES**



**PUMP with  
3/8" BSP PORTS**

- \* Constructed from marine quality bronze and stainless steel
- \* Self-prime from dry up to 1.5m
- \* Easy to service and maintain
- \* Will tolerate abrasive wear
- \* Handles hard and soft solids without clogging
- \* Can pump in either direction
- \* Will not airlock